

VDI SAFETY

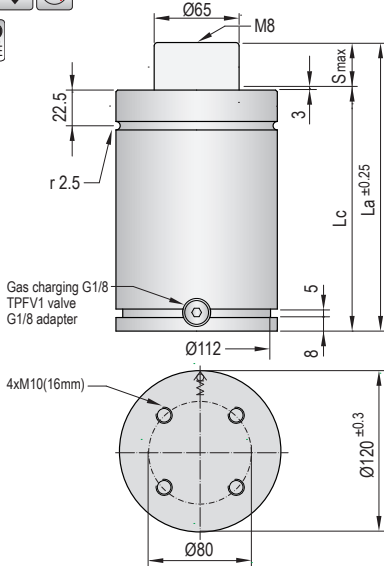


MICRO

TITAN

TPH

TPS

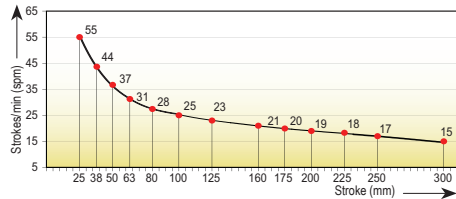


Gas charging G1/8
TPFV1 valve
G1/8 adapter

- Pressure medium **Nitrogen (N₂)**
- Max. charging pressure **150 Bar**
- Min. charging pressure **35 Bar**
- Rod seal area **33,18 cm²**
- Operating temperature **0°C - 80°C**
- Force increase by temperature **0,33 %/°C**
- Max. stem speed **1,6 m/s**
- Maintenance kit **Kit S5000**

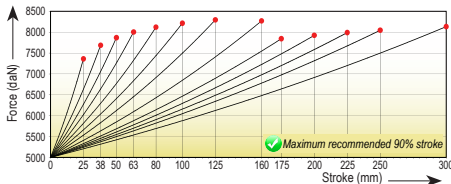


Maximum strokes / minute (at 20°C)

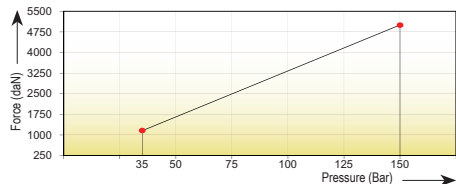


| Code | Smax mm | La mm | Lc mm | | Fa daN | | F daN | | Fc daN | | P Bar | V l | | Kg |
|--------------|---------|-------|-------|--------------------|--------|------|-------|-------|--------|---------------|-------|-------|-------|----|
| TPS 5000x25 | 25 | 190 | 165 | 5000 ±5% (20°C) | | 7000 | 7330 | | | 150 (20°C) | | 0,258 | 12,01 | |
| TPS 5000x38 | 38 | 216 | 178 | | 7265 | 7655 | 0,361 | 12,85 | | | | | | |
| TPS 5000x50 | 50 | 240 | 190 | | 7410 | 7835 | 0,455 | 13,60 | | | | | | |
| TPS 5000x63 | 63 | 267 | 204 | | 7515 | 7970 | 0,557 | 14,50 | | | | | | |
| TPS 5000x80 | 80 | 300 | 220 | | 7610 | 8085 | 0,690 | 15,39 | | | | | | |
| TPS 5000x100 | 100 | 340 | 240 | | 7685 | 8180 | 0,847 | 16,48 | | | | | | |
| TPS 5000x125 | 125 | 390 | 265 | | 7750 | 8260 | 1,044 | 18,05 | | | | | | |
| TPS 5000x160 | 160 | 460 | 300 | | 7730 | 8235 | 1,342 | 19,83 | | | | | | |
| TPS 5000x175 | 175 | 490 | 315 | | 7390 | 7810 | 1,601 | 20,11 | | | | | | |
| TPS 5000x200 | 200 | 540 | 340 | | 7455 | 7890 | 1,798 | 21,70 | | | | | | |
| TPS 5000x225 | 225 | 590 | 365 | | 7505 | 7955 | 1,994 | 22,60 | | | | | | |
| TPS 5000x250 | 250 | 640 | 390 | | 7550 | 8010 | 2,191 | 23,85 | | | | | | |
| TPS 5000x300 | 300 | 740 | 440 | | 7620 | 8100 | 2,583 | 25,60 | | | | | | |

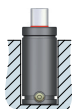
Force/stroke ratio



Initial force/charging pressure ratio



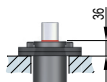
Assembly possibilities



DROP-IN



SCREWS



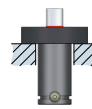
FS 120-FSC 120



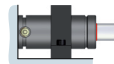
FP 120-FPR 120



FB 120



FRS 120



FI 120-FI 120/1